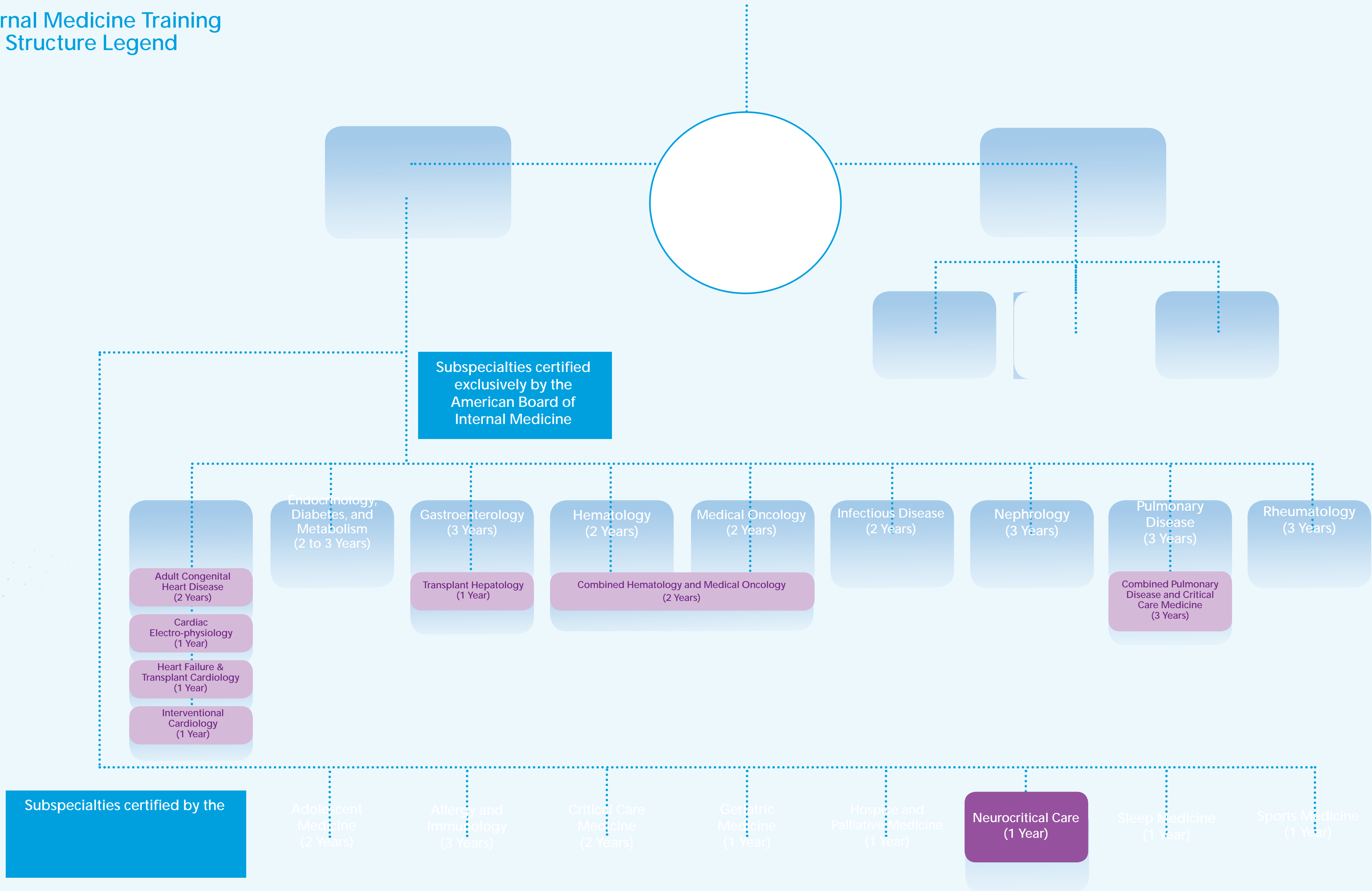


Internal Medicine Training Structure Legend

- A
- B
- C
- D
- E



Subspecialties certified by the

Subspecialties certified exclusively by the American Board of Internal Medicine

Adult Congenital Heart Disease (2 Years)

Cardiac Electro-physiology (1 Year)

Heart Failure & Transplant Cardiology (1 Year)

Interventional Cardiology (1 Year)

Endocrinology, Diabetes, and Metabolism (2 to 3 Years)

Gastroenterology (3 Years)

Transplant Hepatology (1 Year)

Hematology (2 Years)

Medical Oncology (2 Years)

Combined Hematology and Medical Oncology (2 Years)

Infectious Disease (2 Years)

Nephrology (3 Years)

Pulmonary Disease (3 Years)

Combined Pulmonary Disease and Critical Care Medicine (3 Years)

Rheumatology (3 Years)

Adolescent Medicine (2 Years)

Allergy and Immunology (3 Years)

Critical Care Medicine (2 Years)

Geriatric Medicine (1 Year)

Hospice and Palliative Medicine (1 Year)

Neurocritical Care (1 Year)

Sleep Medicine (1 Year)

Sports Medicine (1 Year)